

Unió



Its versatile design allows the possibility of arranging the pieces to form various shapes. Its design consists of an independent concave seating piece and another inclined back support. Its architectonic function makes it an element to be placed as a simple module or linked together to limit and organize areas.

© Patented Model

MATERIAL Reinforced concrete

STANDARD COLOUR Standard Granite grey, ochre

TEXTURA Stripped, plain

FINISH Water repellent

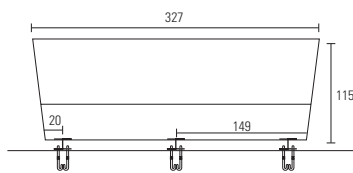
APPROX. WEIGHT - Seat: 1,068 Kg.

- Back support: 1,985 Kg.

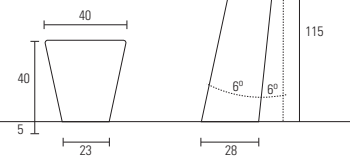
INSTALLATION Base supported and root fixing

DESIGN g.c.a. arquitectes associatss

FRONTAL (banco-respaldo)



PERFIL (banco-respaldo)



Módulo esquina- Respaldo



Módulo Intermedio



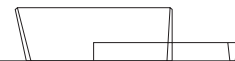
Banco



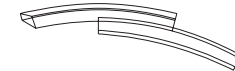
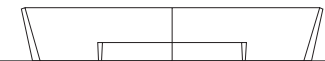
Respaldo + Banco



1 Respaldo + 1 Banco



2 Respaldos + 1 Banco



Càntir, 1 Zona Industrial del Sud
08292 Esparreguera (Barcelona)

Tel. +00 34 93 7771300*
Fax +00 34 93 7771704

www.pmata.com
info@pmata.com

Specifications



PAVIMENTS MATA®, S.A.